

**ADGRE5 / CD97 Antibody (Cytoplasmic Domain)**  
**Rabbit Polyclonal Antibody**  
**Catalog # ALS10562****Specification**

---

**ADGRE5 / CD97 Antibody (Cytoplasmic Domain) - Product Information**

Application	IHC-P, ICC
Primary Accession	<a href="#">P48960</a>
Reactivity	Human, Monkey, Dog
Host	Rabbit
Clonality	Polyclonal
Calculated MW	92kDa KDa
Dilution	IHC-P~~N/A ICC~~N/A

**ADGRE5 / CD97 Antibody (Cytoplasmic Domain) - Additional Information****Gene ID** 976**Other Names**

CD97 antigen, Leukocyte antigen CD97, CD97, CD97 antigen subunit alpha, CD97 antigen subunit beta, CD97

**Target/Specificity**

Human CD97. BLAST analysis of the peptide immunogen showed no homology with other human proteins.

**Reconstitution & Storage**

Long term: -70°C; Short term: +4°C

**Precautions**

ADGRE5 / CD97 Antibody (Cytoplasmic Domain) is for research use only and not for use in diagnostic or therapeutic procedures.

**ADGRE5 / CD97 Antibody (Cytoplasmic Domain) - Protein Information****Name** ADGRE5 ([HGNC:1711](#))**Function**

Receptor potentially involved in both adhesion and signaling processes early after leukocyte activation. Plays an essential role in leukocyte migration.

**Cellular Location**

Cell membrane {ECO:0000250|UniProtKB:Q9Z0M6}; Multi-pass membrane protein

**Tissue Location**

Broadly expressed, found on most hematopoietic cells, including activated lymphocytes, monocytes, macrophages, dendritic cells, and granulocytes. Expressed also abundantly by smooth

muscle cells. Expressed in thyroid, colorectal, gastric, esophageal and pancreatic carcinomas too. Expression are increased under inflammatory conditions in the CNS of multiple sclerosis and in synovial tissue of patients with rheumatoid arthritis. Increased expression of CD97 in the synovium is accompanied by detectable levels of soluble CD97 in the synovial fluid

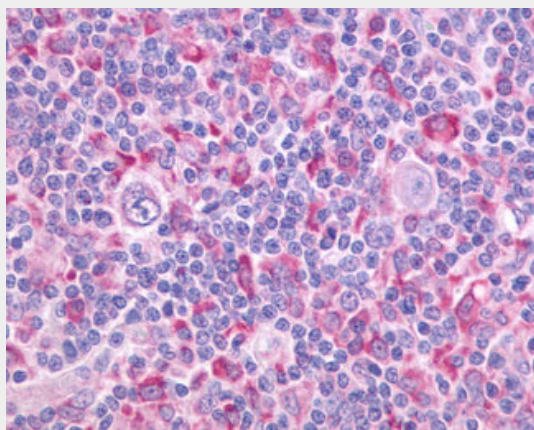
**Volume**

50 µl

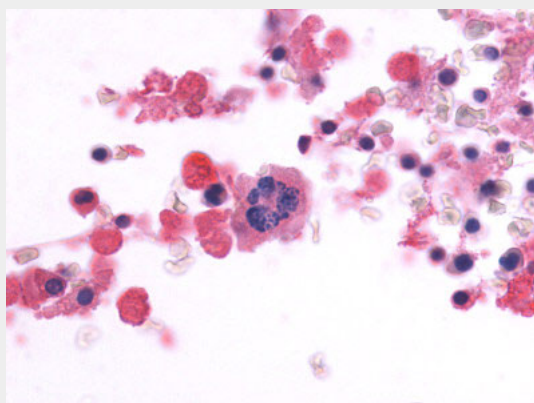
**ADGRE5 / CD97 Antibody (Cytoplasmic Domain) - Protocols**

Provided below are standard protocols that you may find useful for product applications.

- [Western Blot](#)
- [Blocking Peptides](#)
- [Dot Blot](#)
- [Immunohistochemistry](#)
- [Immunofluorescence](#)
- [Immunoprecipitation](#)
- [Flow Cytometry](#)
- [Cell Culture](#)

**ADGRE5 / CD97 Antibody (Cytoplasmic Domain) - Images**

Anti-CD97 antibody IHC of human Lymph Node, Hodgkins Lymphoma.



Anti-CD97 antibody ALS10562 IHC of human bone marrow.

**ADGRE5 / CD97 Antibody (Cytoplasmic Domain) - Background**

Receptor potentially involved in both adhesion and signaling processes early after leukocyte activation. Plays an essential role in leukocyte migration (By similarity).

**ADGRE5 / CD97 Antibody (Cytoplasmic Domain) - References**

Hamann J.,et al.J. Immunol. 155:1942-1950(1995).  
Hamann J.,et al.Genomics 32:144-147(1996).  
Hamann J.,et al.Submitted (OCT-1997) to the EMBL/GenBank/DDBJ databases.  
Gray J.X.,et al.J. Immunol. 157:5438-5447(1996).  
Suwa M.,et al.Submitted (JUL-2001) to the EMBL/GenBank/DDBJ databases.